

# Ride Smart

## A Biker's Perspective

**Prepared By:**

**A.B.A.T.E. of Illinois, Inc.**

**Mike Myers**

**State Coordinator**

In cooperation with:

Illinois Department of Transportation  
Division of Traffic Safety

Ride Smart is a Choice!

It is **YOUR** Choice!

We all make choices in life. Why not take time and think about what Smart Riding Choices you want to make?

We all make choices in life. Why not take time and think about what Smart Riding Choices you want to make?

– **Check your Bike before each Ride**

We all make choices in life. Why not take time and think about what Smart Riding Choices you want to make?

- Check your Bike before each Ride
- **Drink Alcohol and Ride**

We all make choices in life. Why not take time and think about what Smart Riding Choices you want to make?

- Check your Bike before each Ride
- Drink Alcohol and Ride
- **Drugs and Ride**

We all make choices in life. Why not take time and think about what Smart Riding Choices you want to make?

- Check your Bike before each Ride
- Drink Alcohol and Ride
- Drugs and Ride
- **Evaluate Medical condition to Ride**



We all make choices in life. Why not take time and think about what Smart Riding Choices you want to make?

- Check your Bike before each Ride
- Drink Alcohol and Ride
- Drugs and Ride
- Evaluate Medical condition to Ride
- Be Aware on Ride

We all make choices in life. Why not take time and think about what Smart Riding Choices you want to make?

- Check your Bike before each Ride
- Drink Alcohol and Ride
- Drugs and Ride
- Evaluate Medical condition to Ride
- Be Aware on Ride
- **Assume you are seen**

We all make choices in life. Why not take time and think about what Smart Riding Choices you want to make?

- Check your Bike before each Ride
- Drink Alcohol and Ride
- Drugs and Ride
- Evaluate Medical condition to Ride
- Be Aware on Ride
- Assume you are seen
- Type of Traffic

We all make choices in life. Why not take time and think about what Smart Riding Choices you want to make?

- Check your Bike before each Ride
- Drink Alcohol and Ride
- Drugs and Ride
- Evaluate Medical condition to Ride
- Be Aware on Ride
- Assume you are seen
- Type of Traffic
- Proper **Braking**

We all make choices in life. Why not take time and think about what Smart Riding Choices you want to make?

- Check your Bike before each Ride
- Drink Alcohol and Ride
- Drugs and Ride
- Evaluate Medical condition to Ride
- Be Aware on Ride
- Assume you are seen
- Type of Traffic
- Proper Braking
- Cycle Rider Training Course

**Based on Motorcycle Crashes in Illinois  
that resulted in fatalities in 2011 and 2012**

## **Root Causes - 2011**

- **Motorcyclist Impaired**

## **Root Causes - 2012**

- **Right-of-Way Violation**

## Root Causes - 2011

- **Motorcyclist Impaired**
- **Right-of-Way Violation**

## Root Causes - 2012

- **Right-of-Way Violation**
- **Motorcyclist Impaired**




## Root Causes - 2011

- Motorcyclist Impaired
- Right-of-Way Violation
- **Motorcyclist Riding Skills** →

## Root Causes - 2012

- Right-of-Way Violation
- Motorcyclist Impaired
- **Motorcyclist Riding Skills**

## Root Causes - 2011

- Motorcyclist Impaired
- Right-of-Way Violation
- Motorcyclist Riding Skills
- **Motorcycle Speed** 

## Root Causes - 2012

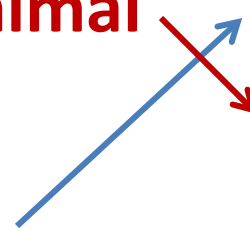
- Right-of-Way Violation
- Motorcyclist Impaired
- Motorcyclist Riding Skills
- **Motorcycle Speed**

## Root Causes - 2011

- Motorcyclist Impaired
- Right-of-Way Violation
- Motorcyclist Riding Skills
- Motorcycle Speed
- **Motorcycle versus Animal**
- Motorcyclist Fault
- **Motorcyclist Medical**

## Root Causes - 2012

- Right-of-Way Violation
- Motorcyclist Impaired
- Motorcyclist Riding Skills
- Motorcycle Speed
- **Motorcyclist Medical**
- **Motorcycle versus Animal**



## **Root Causes - 2011**

- Motorcyclist Impaired
- Right-of-Way Violation
- Motorcyclist Riding Skills
- Motorcycle Speed
- Motorcycle versus Animal
- Motorcyclist Fault
- Motorcyclist Medical
- Motorcycle Equipment
- Construction Zone and Road Condition

## **Root Causes - 2012**

- Right-of-Way Violation
- Motorcyclist Impaired
- Motorcyclist Riding Skills
- Motorcycle Speed
- Motorcyclist Medical
- Motorcycle versus Animal
- Motorcycle Equipment
- Road Condition

# Motorcyclist Impaired

## #1 Root Cause - 2011

- Alcohol, Drugs, Alcohol & Drugs
  - 49 crashes resulted in 52 fatalities
    - 45 - Operator
    - 7 - Passenger
  - 30 One Vehicle
  - 13 Two Vehicle
  - 6 Three Vehicle
  - 11 No “M” Classification

## #2 Root Cause - 2012

- Alcohol, Drugs, Alcohol & Drugs
  - 37 crashes resulted in 37 fatalities
    - 37 - Operator
    - 0 - Passenger
  - 27 One Vehicle
  - 9 Two Vehicle
  - 1 Three Vehicle
  - 5 No “M” Classification

# Motorcyclist Impaired

## #1 Root Cause - 2011

- Alcohol, Drugs, Alcohol & Drugs
  - 49 crashes resulted in 52 fatalities
    - 45 - Operator
    - 7 - Passenger
  - 30 One Vehicle
  - 13 Two Vehicle
  - 6 Three Vehicle
  - 11 No “M” Classification

## #2 Root Cause - 2012

- Alcohol, Drugs, Alcohol & Drugs
  - 37 crashes resulted in 37 fatalities
    - 37 - Operator
    - 0 - Passenger
  - 27 One Vehicle
  - 9 Two Vehicle
  - 1 Three Vehicle
  - 5 No “M” Classification

### **Contributory Causes:**

- Unable to negotiate curves
- Hit fixed objects
- Riding in a group, rear ended other motorcycle(s)
- Ran through gate hit train
- Lost control ran off roadway
- **Fail to negotiate curve in rain at 120 MPH**

# Motorcyclist Impaired

## #1 Root Cause - 2011

- Alcohol, Drugs, Alcohol & Drugs
  - 49 crashes resulted in 52 fatalities
    - 45 - Operator
    - 7 - Passenger
  - 30 One Vehicle
  - 13 Two Vehicle
  - 6 Three Vehicle
  - 11 No “M” Classification

## #2 Root Cause - 2012

- Alcohol, Drugs, Alcohol & Drugs
  - 37 crashes resulted in 37 fatalities
    - 37 - Operator
    - 0 - Passenger
  - 27 One Vehicle
  - 9 Two Vehicle
  - 1 Three Vehicle
  - 5 No “M” Classification

### **Contributory Causes:**

- Unable to negotiate curves
- Hit fixed objects
- Riding in a group, rear ended other motorcycle(s)
- Ran through gate hit train
- Lost control ran off roadway
- Fail to negotiate curve in rain at 120 MPH

**All different types of Motorcycles**

# Motorcyclist Impaired

## #1 Root Cause - 2011

Age Group	Per Age Group
18 - 19	1
20 - 30	13
31 - 40	10
41 - 50	7
51 - 60	8
61 - 70	6
71 - 80	0

## #2 Root Cause - 2012

Age Group	Per Age Group
18 - 19	0
20 - 30	6
31 - 40	10
41 - 50	10
51 - 60	10
61 - 70	1
71 - 80	0



# Motorcyclist Impaired

## Time of Day - Day of Week

Time	Sun.	Mon.	Tue.	Wed.	Thur.	Fri.	Sat.	2011 Total	2012 Total
12:00 - 2:00 AM	3 2	1		1	1	1 2	2	6	7
2:00 - 4:00 AM	2		1					2	1
4:00 - 6:00 AM	1 1		2		1			2	3
6:00 - 8:00 AM								0	0
8:00 - 10:00 AM	1						1	2	0
10:00 - 12:00 PM		1						1	0
12:00 - 2:00 PM				1			2	3	0
2:00 - 4:00 PM	1	1	1				4 1	6	2
4:00 - 6:00 PM	2 4	2			1	1	4 5	9	10
6:00 - 8:00 PM	5	1 1		2	1 1		2 1	9	5
8:00 - 10:00 PM	2	2	1	1	1 1	2 1	2 1	8	6
10:00 - 12:00 AM						1 1	2	1	3
<b>Day Total</b>	<b>14 10</b>	<b>7 2</b>	<b>2 3</b>	<b>2 3</b>	<b>4 3</b>	<b>5 4</b>	<b>15 12</b>		

# Right of Way Violation

## #2 Root Cause - 2011

- 36 Crashes resulted in 37 fatalities
  - 34 - Operator
  - 3 - Passenger
  - 0 - Driver of Other Vehicle
- In 11 of those Crashes the Vehicle Driver was charged with DUI
  - Resulted in 11 of the 37 fatalities
    - 9 Operator
    - 2 Passenger
- 7 No “M” Classification
- 3 Cycle Rider Training Course

## #1 Root Cause - 2012

- 54 Crashes resulted in 55 fatalities
  - 49 - Operator
  - 5 - Passenger
  - 1 - Driver of Other Vehicle
- In 11 of those Crashes the Vehicle Driver was charged with DUI
  - Resulted in 11 of the 55 fatalities
    - 10 - Operator
    - 1 - Passenger
- 7 No “M” Classification
- 3 Cycle Rider Training Course

# Right of Way Violation

## #2 Root Cause - 2011

- 36 Crashes resulted in 37 fatalities
  - 34 - Operator
  - 3 - Passenger
  - 0 - Driver of Other Vehicle
- In 11 of those Crashes the Vehicle Driver was charged with DUI
  - Resulted in 11 of the 37 fatalities
    - 9 Operator
    - 2 Passenger
- 7 No “M” Classification
- 3 Cycle Rider Training Course

## #1 Root Cause - 2012

- 54 Crashes resulted in 55 fatalities
  - 49 - Operator
  - 5 - Passenger
  - 1 - Driver of Other Vehicle
- In 11 of those Crashes the Vehicle Driver was charged with DUI
  - Resulted in 11 of the 55 fatalities
    - 10 - Operator
    - 1 - Passenger
- 7 No “M” Classification
- 3 Cycle Rider Training Course

## **Contributory Causes:**

- Left Turn In MC Path
- “U” Turn in MC Path
- Fail to Reduce Speed

- Rear End MC
- Merge - Sideswipe
- Cross Center Line in MC Path



**IMPAIRED CAGER**

# Right of Way Violation

## #2 Root Cause - 2011

Age Group	Per Age Group
18 - 19	1
20 - 30	8
31 - 40	3
41 - 50	3
51 - 60	11
61 - 70	7
71 - 80	1

## #1 Root Cause - 2012

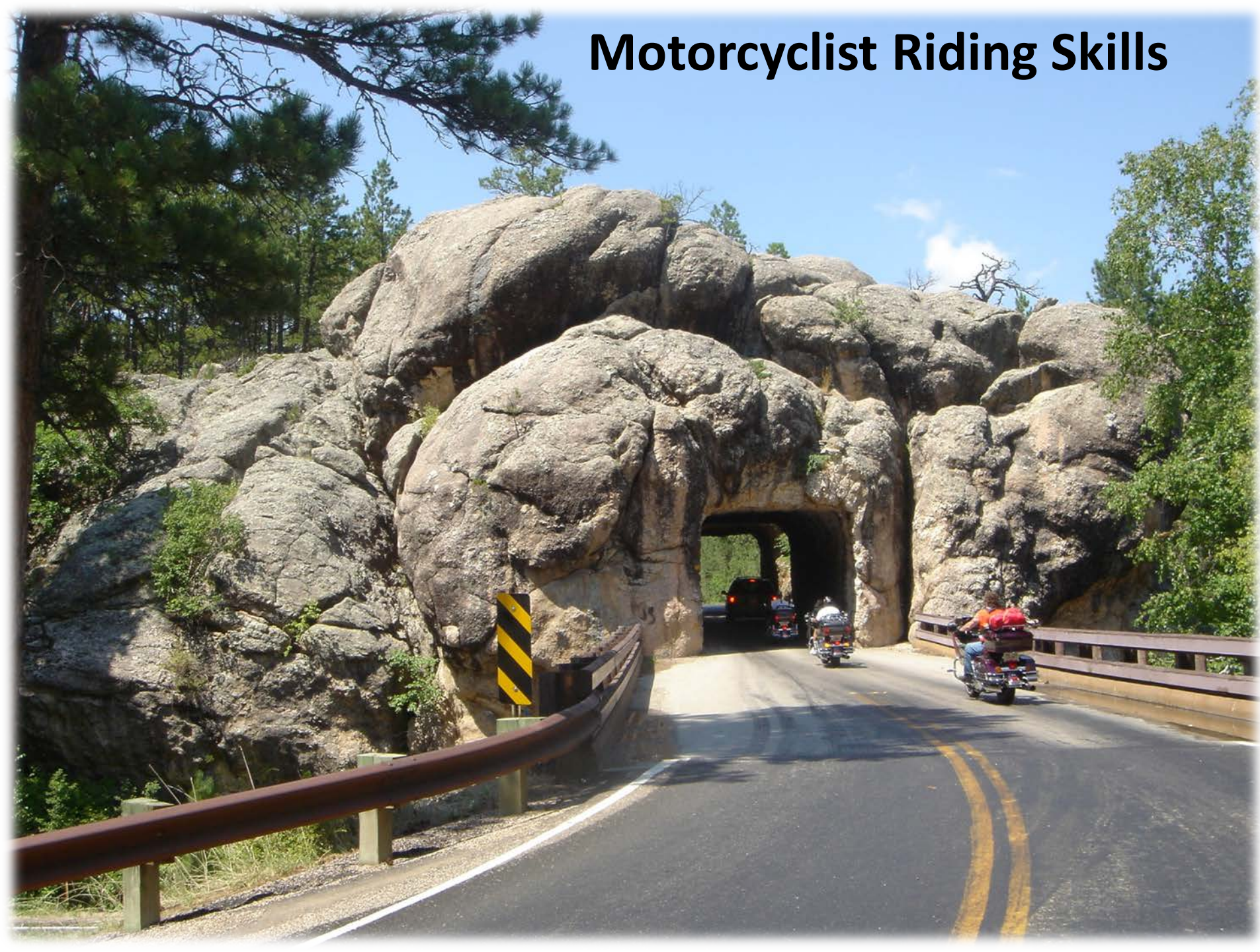
Age Group	Per Age Group
18 - 19	2
20 - 30	10
31 - 40	11
41 - 50	9
51 - 60	14
61 - 70	7
71 - 80	1

# Right of Way Violation

## Time of Day - Day of Week

Time	Sun.	Mon.	Tue.	Wed.	Thur.	Fri.	Sat.	2011 Total	2012 Total						
12:00 - 2:00 AM	2	1					1	0	4						
2:00 - 4:00 AM								0	0						
4:00 - 6:00 AM						1	1	1	1						
6:00 - 8:00 AM			1		1	1	2	2	3						
8:00 - 10:00 AM	1	1		2	1	1	1	2	5						
10:00 - 12:00 PM	1	2		1	1		1	4	3						
12:00 - 2:00 PM		2	1		2	1	1	3	4						
2:00 - 4:00 PM	1	1	1	1	1	1	3	2	1	5	9				
4:00 - 6:00 PM	2	4	4	1	1	2	2	2	1	7	14				
6:00 - 8:00 PM			1	1	1	3	1	2	5	4					
8:00 - 10:00 PM	1	2	2	1	1	2	3	5	7						
10:00 - 12:00 AM					1		1	2	0						
<b>Day Total</b>	<b>5</b>	<b>8</b>	<b>2</b>	<b>11</b>	<b>4</b>	<b>6</b>	<b>2</b>	<b>9</b>	<b>6</b>	<b>7</b>	<b>6</b>	<b>8</b>	<b>11</b>	<b>5</b>	

# Motorcyclist Riding Skills



# Motorcyclist Riding Skills

## #3 Root Cause - 2011

- 20 Crashes resulted in 20 fatalities
  - 18 - Operator
  - 2 - Passenger
- 13 One Vehicle
- 5 Two Vehicle
- 2 Three Vehicle
- 0 Six Vehicle
- 4 No “M” Classification
- 0 Cycle Rider Training Course

## #3 Root Cause - 2012

- 23 Crashes resulted in 24 fatalities
  - 22 - Operator
  - 2 - Passenger
- 12 One Vehicle
- 10 Two Vehicle
- 0 Three Vehicle
- 1 Four Vehicle
- 4 No “M” Classification
- 2 Cycle Rider Training Course



# Motorcyclist Riding Skills

## #3 Root Cause - 2011

- 20 Crashes resulted in 20 fatalities
  - 18 - Operator
  - 2 - Passenger
- 13 One Vehicle
- 5 Two Vehicle
- 2 Three Vehicle
- 0 Six Vehicle
- 4 No “M” Classification
- 0 Cycle Rider Training Course

## #3 Root Cause - 2012

- 23 Crashes resulted in 24 fatalities
  - 22 - Operator
  - 2 - Passenger
- 12 One Vehicle
- 10 Two Vehicle
- 0 Three Vehicle
- 1 Four Vehicle
- 4 No “M” Classification
- 2 Cycle Rider Training Course

### **Contributory Causes:**

- Fail to negotiate curve
- Panic stop - lost control
- Rear Braking ONLY
- Crossed center line
- On Ramp – lost control
- Fail to judge stopping distance

# Motorcyclist Riding Skills

## #3 Root Cause - 2011

Age Group	Per Age Group
18 - 19	0
20 - 30	3
31 - 40	4
41 - 50	3
51 - 60	5
61 - 70	3
71 - 80	0

## #3 Root Cause - 2012

Age Group	Per Age Group
18 - 19	0
20 - 30	5
31 - 40	5
41 - 50	4
51 - 60	8
61 - 70	1
71 - 80	0

# Motorcyclist Riding Skills

## Time of Day - Day of Week

Time	Sun.	Mon.	Tue.	Wed.	Thur.	Fri.	Sat.	2011 Total	2012 Total
12:00 - 2:00 AM								0	0
2:00 - 4:00 AM					1			1	0
4:00 - 6:00 AM				1	1			0	2
6:00 - 8:00 AM	1			1				0	2
8:00 - 10:00 AM		1 1			1		1	3	1
10:00 - 12:00 PM						1	1 1	2	1
12:00 - 2:00 PM	2			1	1		1 1	4	2
2:00 - 4:00 PM	1			1	1		1 4	3	5
4:00 - 6:00 PM	2			1	1	1	1 1	2	5
6:00 - 8:00 PM		1	1 1	1		1	1	4	2
8:00 - 10:00 PM							2	0	2
10:00 - 12:00 AM			1			1		1	1
<b>Day Total</b>	<b>3 3</b>	<b>2 1</b>	<b>2 1</b>	<b>1 5</b>	<b>3 3</b>	<b>3 1</b>	<b>6 9</b>		

# Motorcycle Speed

## #4 Root Cause - 2011

- 16 Crashes resulted in 16 fatalities
  - 16 - Operator
  - 0 - Passenger
- 5 One Vehicle
- 9 Two Vehicle
- 1 Three Vehicle
- 1 Five Vehicle
- 5 No “M” Classification
- 0 Cycle Rider Training Course
- 14 Sport Bikes, 2 HD

## #4 Root Cause - 2012

- 14 Crashes resulted in 14 fatalities
  - 14 - Operator
  - 0 - Passenger
- 6 One Vehicle
- 6 Two Vehicle
- 2 Three Vehicle
- 0 Five Vehicle
- 6 No “M” Classification
- 0 Cycle Rider Training Course
- 13 Sport Bikes, 1 HD

# Motorcycle Speed

## #4 Root Cause - 2011

- 16 Crashes resulted in 16 fatalities
  - 16 - Operator
  - 0 - Passenger
- 5 One Vehicle
- 9 Two Vehicle
- 1 Three Vehicle
- 1 Five Vehicle
- 5 No “M” Classification
- 0 Cycle Rider Training Course
- 14 Sport Bikes, 2 HD

## #4 Root Cause - 2012

- 14 Crashes resulted in 14 fatalities
  - 14 - Operator
  - 0 - Passenger
- 6 One Vehicle
- 6 Two Vehicle
- 2 Three Vehicle
- 0 Five Vehicle
- 6 No “M” Classification
- 0 Cycle Rider Training Course
- 13 Sport Bikes, 1 HD

### **Contributory Causes:**

- Speeds in excess of 100 MPH
- Fail to negotiate curve at 100 MPH
- Riding on one wheel
- Passing on shoulder
- Passing at an intersection
- Weaving in and out of traffic

# Motorcycle Speed

## #4 Root Cause - 2011

Age Group	Per Age Group
18 - 19	1
20 - 30	8
31 - 40	3
41 - 50	2
51 - 60	2
61 - 70	0
71 - 80	0

## #4 Root Cause - 2012

Age Group	Per Age Group
18 - 19	1
20 - 30	9
31 - 40	3
41 - 50	1
51 - 60	0
61 - 70	0
71 - 80	0

# Motorcycle Speed

## Time of Day - Day of Week

Time	Sun.	Mon.	Tue.	Wed.	Thur.	Fri.	Sat.	2011 Total	2012 Total
12:00 - 2:00 AM			1				1	1	1
2:00 - 4:00 AM						1		0	1
4:00 - 6:00 AM								0	0
6:00 - 8:00 AM				1 1				1	1
8:00 - 10:00 AM	1			2				2	1
10:00 - 12:00 PM								0	0
12:00 - 2:00 PM	2							0	2
2:00 - 4:00 PM			1			1		1	1
4:00 - 6:00 PM			2	1		2 1	1	6	1
6:00 - 8:00 PM	1 1	1		1	1			1	4
8:00 - 10:00 PM		1				1		1	1
10:00 - 12:00 AM	1 1			1			1	3	1
<b>Day Total</b>	<b>1 5</b>	<b>1 2</b>	<b>3 1</b>	<b>5 2</b>	<b>0 1</b>	<b>3 3</b>	<b>3 0</b>		



**Motorcycle vs Animal**



# Motorcycle vs Animal

## #5 Root Cause - 2011

- 8 Crashes resulted in 8 fatalities
  - 7 - Operator
  - 1 - Passenger
- All had “M” Classification
- 0 Cycle Rider Training Course

## #6 Root Cause - 2012

- 5 Crashes resulted in 5 fatalities
  - 5 - Operator
  - 0 - Passenger
- All had “M” Classification
- 0 Cycle Rider Training Course

# Motorcycle vs Animal

## #5 Root Cause - 2011

- 8 Crashes resulted in 8 fatalities
  - 7 - Operator
  - 1 - Passenger
- All had “M” Classification
- 0 Cycle Rider Training Course

## #6 Root Cause - 2012

- 5 Crashes resulted in 5 fatalities
  - 5 - Operator
  - 0 - Passenger
- All had “M” Classification
- 0 Cycle Rider Training Course

## **Contributory Causes:**

- Tried to avoid animal
- Riding
  - In Country
  - Time of Year (Spring and Fall)
- Type of Animals
  - Cows
  - Deer
  - Raccoon

# Motorcycle vs Animal

## #5 Root Cause - 2011

Age Group	Per Age Group
18 - 19	1
20 - 30	0
31 - 40	0
41 - 50	2
51 - 60	2
61 - 70	2
71 - 80	0

## #6 Root Cause - 2012

Age Group	Per Age Group
18 - 19	0
20 - 30	0
31 - 40	1
41 - 50	0
51 - 60	3
61 - 70	1
71 - 80	0

# Motorcycle vs Animal

## Time of Day - Day of Week

Time	Sun.	Mon.	Tue.	Wed.	Thur.	Fri.	Sat.	2011 Total	2012 Total
12:00 - 2:00 AM	1			1				1	1
2:00 - 4:00 AM					1			1	0
4:00 - 6:00 AM								0	0
6:00 - 8:00 AM						1		1	0
8:00 - 10:00 AM					1		1	0	2
10:00 - 12:00 PM								0	0
12:00 - 2:00 PM	1							1	0
2:00 - 4:00 PM				1			1	1	1
4:00 - 6:00 PM	1							0	1
6:00 - 8:00 PM							1	1	0
8:00 - 10:00 PM							1	1	0
10:00 - 12:00 AM		1						1	0
<b>Day Total</b>	<b>2</b> <b>1</b>	<b>1</b> <b>0</b>	<b>0</b> <b>0</b>	<b>1</b> <b>1</b>	<b>1</b> <b>1</b>	<b>1</b> <b>0</b>	<b>2</b> <b>2</b>		

# Motorcyclist Medical Condition

## #7 Root Cause - 2011

- 3 Crashes resulted in 3 fatalities
  - 3 - Operator
  - 0 - Passenger
- 3 One Vehicle
- 0 Two Vehicle
- All had “M” Classification
- 0 Cycle Rider Training Course

## #5 Root Cause - 2012

- 8 Crashes resulted in 9 fatalities
  - 8 - Operator
  - 1 - Passenger
- 6 One Vehicle
- 2 Two Vehicle
- All had “M” Classification
- 0 Cycle Rider Training Course

# Motorcyclist Medical Condition

## #7 Root Cause - 2011

- 3 Crashes resulted in 3 fatalities
  - 3 - Operator
  - 0 - Passenger
- 3 One Vehicle
- 0 Two Vehicle
- All had “M” Classification
- 0 Cycle Rider Training Course

## #5 Root Cause - 2012

- 8 Crashes resulted in 9 fatalities
  - 8 - Operator
  - 1 - Passenger
- 6 One Vehicle
- 2 Two Vehicle
- All had “M” Classification
- 0 Cycle Rider Training Course

### **Contributory Causes:**

- Heart related ( 3 in 2011 & 6 in 2012)
- Fatigue ( 1 in 2012 )
- Dehydrated ( 1 in 2012 )

# Motorcyclist Medical Condition

## #7 Root Cause - 2011

Age Group	Per Age Group
18 - 19	0
20 - 30	0
31 - 40	0
41 - 50	0
51 - 60	1
61 - 70	1
71 - 80	1

## #5 Root Cause - 2012

Age Group	Per Age Group
18 - 19	0
20 - 30	0
31 - 40	1
41 - 50	1
51 - 60	3
61 - 70	1
71 - 80	2

# Motorcyclist Fault

## Not Impaired - Not Speeding

### #6 Root Cause - 2011

- 4 Crashes resulted in 4 fatalities
  - 4 - Operator
  - 0 - Passenger
- 0 One Vehicle
- 3 Two Vehicle
- 1 Three Vehicle
- 1 No “M” Classification
- 0 Cycle Rider Training Course

### Not a Root Cause - 2012



# Motorcyclist Fault

## Not Impaired - Not Speeding

### #6 Root Cause - 2011

- 4 Crashes resulted in 4 fatalities
  - 4 - Operator
  - 0 - Passenger
- 0 One Vehicle
- 3 Two Vehicle
- 1 Three Vehicle
- 1 No “M” Classification
- 0 Cycle Rider Training Course

### Not a Root Cause - 2012

#### **Contributory Causes:**

- Improper passing
- Disregarding traffic signal or stop sign

# Motorcyclist Fault

Not Impaired - Not Speeding

#6 Root Cause - 2011

Not a Root Cause - 2012

Age Group	Per Age Group
18 - 19	0
20 - 30	1
31 - 40	1
41 - 50	1
51 - 60	1
61 - 70	0
71 - 80	0

# Motorcycle Equipment

## #8 Root Cause - 2011

- 2 Crashes resulted in 2 fatalities
  - 2 - Operator
  - 0 - Passenger
- 1 One Vehicle
- 1 Two Vehicle
- All had “M” Classification
- 0 Cycle Rider Training Course

## #7 Root Cause - 2012

- 2 Crashes resulted in 2 fatalities
  - 1 - Operator
  - 1 - Passenger
- 1 One Vehicle
- 1 Two Vehicle
- 1 No “M” Classification
- 0 Cycle Rider Training Course

# Motorcycle Equipment

## #8 Root Cause - 2011

- 2 Crashes resulted in 2 fatalities
  - 2 - Operator
  - 0 - Passenger
- 1 One Vehicle
- 1 Two Vehicle
- All had “M” Classification
- 0 Cycle Rider Training Course

## #7 Root Cause - 2012

- 2 Crashes resulted in 2 fatalities
  - 1 - Operator
  - 1 - Passenger
- 1 One Vehicle
- 1 Two Vehicle
- 1 No “M” Classification
- 0 Cycle Rider Training Course

### **Contributory Causes:**

- Worn front tire
- Loose front wheel
- Piece came loose and dragged on roadway causing loss of control
- Passenger fell off ( ? )

# Construction Zone – Road Conditions

## #9 Root Cause - 2011

- 2 Crashes resulted in 2 fatalities
  - 2 - Operator
  - 0 - Passenger
- 2 One Vehicle
- 1 No “M” Classification
- 0 Cycle Rider Training Course

## #8 Root Cause - 2012

- 1 Crash resulted in 1 fatality
  - 1 - Operator
  - 0 - Passenger
- 1 Three Vehicle
- Had “M” Classification
- 0 Cycle Rider Training Course

# Construction Zone – Road Conditions

## #9 Root Cause - 2011

- 2 Crashes resulted in 2 fatalities
  - 2 - Operator
  - 0 - Passenger
- 2 One Vehicle
- 1 No “M” Classification
- 0 Cycle Rider Training Course

## #8 Root Cause - 2012

- 1 Crash resulted in 1 fatality
  - 1 - Operator
  - 0 - Passenger
- 1 Three Vehicle
- Had “M” Classification
- 0 Cycle Rider Training Course

### **Contributory Causes:**

- Uneven surface
- Pot hole
- Tire debris ( 2012 )

## Root Causes - 2011

- **Motorcyclist Impaired**
- Right-of-Way Violation
- **Motorcyclist Riding Skills**
- **Motorcycle Speed**
- Motorcycle versus Animal
- Motorcyclist Fault
- Motorcyclist Medical
- Motorcycle Equipment
- Construction Zone and Road Condition

## Root Causes - 2012

- Right-of-Way Violation
- **Motorcyclist Impaired**
- **Motorcyclist Riding Skills**
- **Motorcycle Speed**
- Motorcyclist Medical
- Motorcycle versus Animal
- Motorcycle Equipment
- Road Condition

# In Review

## Fatal Crashes - 2011

- 140 Motorcycle Fatal Crashes
- 144 Total Fatalities
  - 131 Operator Fatalities
  - 13 Passenger Fatalities
- 30 of the Operators had No “M” Classification
- Only 17 of the Operators had taken the Illinois Motorcycle Rider Training Course
- 61 – One Vehicle

## Fatal Crashes - 2012

- 144 Motorcycle Fatal Crashes
- 146 Total Fatalities
  - 137 - Operator Fatalities
  - 9 - Passenger Fatalities
- 23 of the Operators had No “M” Classification
- Only 6 of the Operators had taken the Illinois Motorcycle Rider Training Course
- 57 – One Vehicle



# Impaired Riding and Driving

## Fatal Crashes - 2011

- 49 Motorcycle Operators Impaired (52 Fatalities)
- 11 Right-of-Way Drivers Impaired (11 Fatalities)
- Equals 60 Crashes and 63 Fatalities

## Fatal Crashes - 2012

- 37 Motorcycle Operators Impaired (37 Fatalities)
- 11 Right-of-Way Drivers Impaired (11 Fatalities)
- Equals 48 Crashes and 48 Fatalities

**111 Motorcycle Fatalities in 2 years due to Impairment!**

# Impaired Riding and Driving

## Fatal Crashes - 2011

- 49 Motorcycle Operators Impaired (52 Fatalities)
- **11 Right-of-Way Drivers Impaired (11 Fatalities)**
- Equals 60 Crashes and 63 Fatalities

## Fatal Crashes - 2012

- 37 Motorcycle Operators Impaired (37 Fatalities)
- **11 Right-of-Way Drivers Impaired (11 Fatalities)**
- Equals 48 Crashes and 48 Fatalities

**111 Motorcycle Fatalities in 2 years due to Impairment!**

**89 Motorcycle Fatalities in 2 years due to  
To Motorcyclists Only Impairment!**

Ride Smart is a Choice!

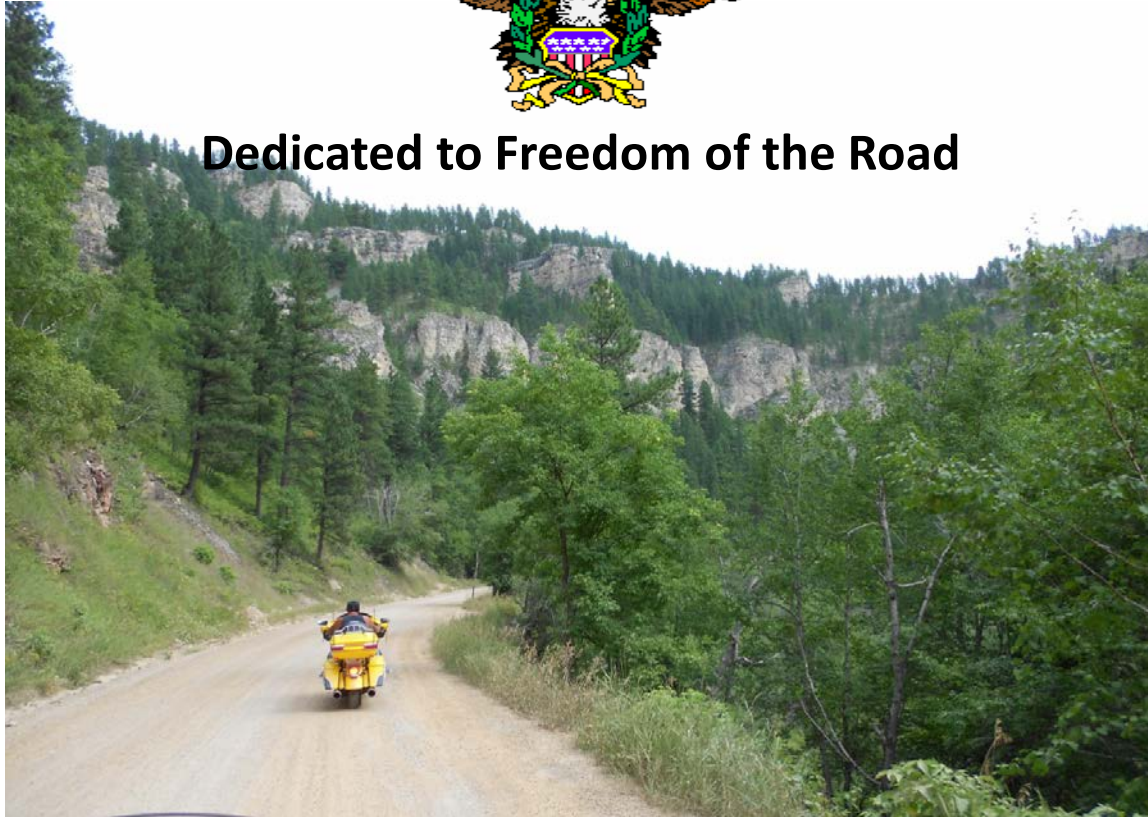
It is YOUR Choice!

What smart riding Choices  
are in YOUR riding future?

**A.B.A.T.E. of Illinois, Inc.**



**Dedicated to Freedom of the Road**



**Ride Smart, Ride Free!**

Contact for more information:

A.B.A.T.E. of Illinois, Inc.

311 E. Main St. Suite 418

Galesburg, IL 61401

[www.abate-il.org](http://www.abate-il.org) 800-872-2283